

Manual - Piazza Underfloor distributor system

Imprint:

GIFAS-ELECTRIC GmbH
CH-9424 Rheineck
Switzerland
www.gifas.ch

Technical changes and errors reserved.

This manual is property of GIFAS-ELECTRIC GmbH and may not be reproduced, copied, translated, transmitted, duplicated or transferred to third parties in part or in whole without previous written authorization by GIFAS-ELECTRIC GmbH.

version: V1.02/0814
English

1.	Basic information	3
1.1	Areas of application	3
1.2	Product features	3
1.3	Scope of delivery	3
1.4	Technical information	3
1.5	Documentation	4
1.5.1	Product labeling	4
1.5.2	Labelling concept for integrated text and references	4
1.6	Storage	4
1.7	Disposal	4
1.8	Service address	4
1.9	Operator's responsibilities	5
2.	Assembly and installation	6
2.1	Work to be done on site by customer	6
2.2	Principle drawing	7
2.3	Installation Piazza	8
3.	Maintenance	11
3.1	Inspection and maintenance schedule	11
3.2	Description of maintenance and inspection works	11
4.	Debugging	12
4.1	Measures for elimination of errors	12
5.	Declaration of conformity	13

1. Basic information

1.1 Areas of application

Industrial buildings, hangars, sports facilities, pedestrian zones, town squares, as well as school buildings and anywhere where power distribution must be available quickly and regularly.

1.2 Product features

Basic features and benefits of Piazza:

- stainless steel box with drainage hole
- refillable cover with square lock
- stainless steel lid with cable outlet for closed operation
- closed operation provides high security for operators, vehicles and pedestrians
- high-end solid rubber power distributor for tough conditions
- high-end solid rubber junction box for connection to main supply
- 3 sizes, available from stock
- compressed air, video/audio, data or water available on request
- protection against vandalism thanks to lockable lid
- easy and quick opening and closing thanks to gas springs
- load capacity 40 tons

Dimension, depth, lid strength and electrical installation equipment depend on customer's requests.

1.3 Scope of delivery

Piazza including the electrical distribution and junction box are delivered ready-to-install. Cabling, filling with concrete, drainage e.g. has to be provided by customer.
GIFAS hard rubber distributors are protected against electric shock (protection class II).

INDICATION

Due to the high spring force of the gas struts only 3 of the 4 gas struts are remounted at factory. For safe and proper function of Piazza 1000 the mounting of the gas strut no. 4 has to be executed by the customer at site after the filling of the lid.

Piazza 1000 is supplied with a safety board which shall be placed on top of the pit each time the lid is opened. This prevents people from falling into the pit during the connecting period. After plugging in it is recommend to store the safety board in the pit, closing the lid and bring out the cables through the cable outlet.

For questions or queries, please contact our sales staff.

1.4 Technical information

- Model Piazza is available in different dimensions/sizes (max. 2x distributor type 7900)
- Suitable for electricity, water and compressed air
- GIFAS hard rubber distributor, which is mounted on the lid, can be equipped individually.
- The dimension of the junction box is depending on electrical needs and is installed in the casing.
- classes of load capacity D400
- Standard execution in stainless steel V2A/1.4301
- Easy, quick opening and closing, supported by gas springs; these gas springs reinforce your muscle craft, and are for a controlled opening and closing of the GIFAS underfloor distribution systems.
- The lid can be equipped optionally with a heating system (equipping by customer himself or by GIFAS).

1.5 Documentation

1.5.1 Product labeling



The CE label attests that your device meets the safety requirements of EU directives 2006/95/EC and 2004/108/EC.

1.5.2 Labelling concept for integrated text and references



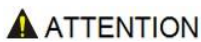
DANGER

Dangerous situation that will certainly cause a serious injury or death, if not avoided.



WARNING

Dangerous situation that may cause a serious injury or death, if not avoided.



ATTENTION

Dangerous situation that may cause a moderate injury, if not avoided.



INDICATION

Designs information, which causes danger of property damages e.g., but not personal injuries.

1.6 Storage

No additional measures are required for storage. When packing, be sure to protect it from damage.

1.7 Disposal



This product must not be thrown in the garbage.

In accordance with official local and national regulations, this product is to be recycled appropriately.



European WEEE Directive 2002/96/EC; Waste Electrical and Electronic Equipment

1.8 Service address

GIFAS-ELECTRIC GmbH

Dietrichstrasse 2
Postfach 275
CH-9424 Rheineck

Phone: +41 7 18 86 44 44
Fax: +41 7 18 86 44 49

www.gifas.ch
info@gifas.ch



1.9 Operator's responsibilities



WARNING

To ensure personal safety, the operating manual must be carefully followed. Incorrect installation or incorrect operation of the product can result in serious injury.

The Gifas inspection and maintenance schedule must be adhered to.

1. The installer must provide the user with all the information relating to the operation of the system. Make sure that this document is always kept in a readable state along with the product.
2. Read this operating manual carefully during the planning phase, before installation and putting into operation.
3. This product is designed and manufactured exclusively for the use indicated in this document. Any other use not expressly indicated here could compromise the integrity of the product and / or be a source of danger. Changes must not be made to the Underfloor power distributor system components.
4. The manufacturer declines any liability for damage caused by improper or inappropriate use of the product.
5. The product shall not be installed in a potentially explosive atmosphere. Flammable gas or fumes constitute a serious safety risk.
6. For countries that are not members of the European Community, the standards and regulations applicable in those countries must be followed in addition to national legal regulations in order to guarantee a certain level of safety.
7. The installation must be carried out in accordance with applicable regulations.
8. The manufacturer assumes no liability in the event of improper execution during assembly or for any deformation that may occur during operation.
9. Only original parts from GIFAS may be used for maintenance. The manufacturer declines all liability with regard to the safety and trouble-free operation of the Underfloor distributor system if components that were not approved by the manufacturer are used in the installation.
10. Only qualified personnel may perform operations on the Underfloor distributor system.
11. All procedures not expressly designated by the manufacturer in the operating manual are not permitted.
12. Neither children nor adults may be in the immediate vicinity of the Underfloor distributor system when it is in operation.

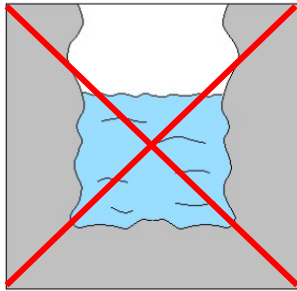
Power supply:

13. Before any intervention on the system, the electrical power must be switched off.
14. The Underfloor distributor system main power supply must be protected in accordance with current regulations and manufacturer instructions.
15. It is necessary to verify that the earthing system is properly installed.

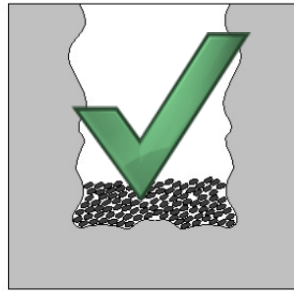
2. Assembly and installation

2.1 Work to be done on site by customer

The cover system is not sealed against surface water; this means that the customer must provide for the drainage of the underfloor distributor system. The customer must therefore ensure that an appropriate drainage line or drainage system is installed.



Without drainage/
Drain pipe

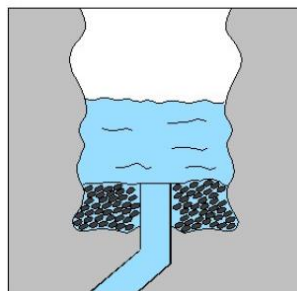


with drainage bed
(e.g. loose subsurface)



with drain pipe
(e.g. solid subsurface)

40L in 30 min.



Check drainage capacity!

The excavation work as well as the professional and standards-compliant installation must be performed by the customer. It is important to ensure that the load capacity of the foundation and/or the cover layer corresponds to the load capacity of the underfloor distributor system in order to prevent subsidence. Delivery of concrete pipe has to be done on site by the customer.

⚠ WARNING

If the Underfloor distributor system is to be used immediately after the excavation work, the installation pit must absolutely be secured or locked so that it does not pose a safety risk!

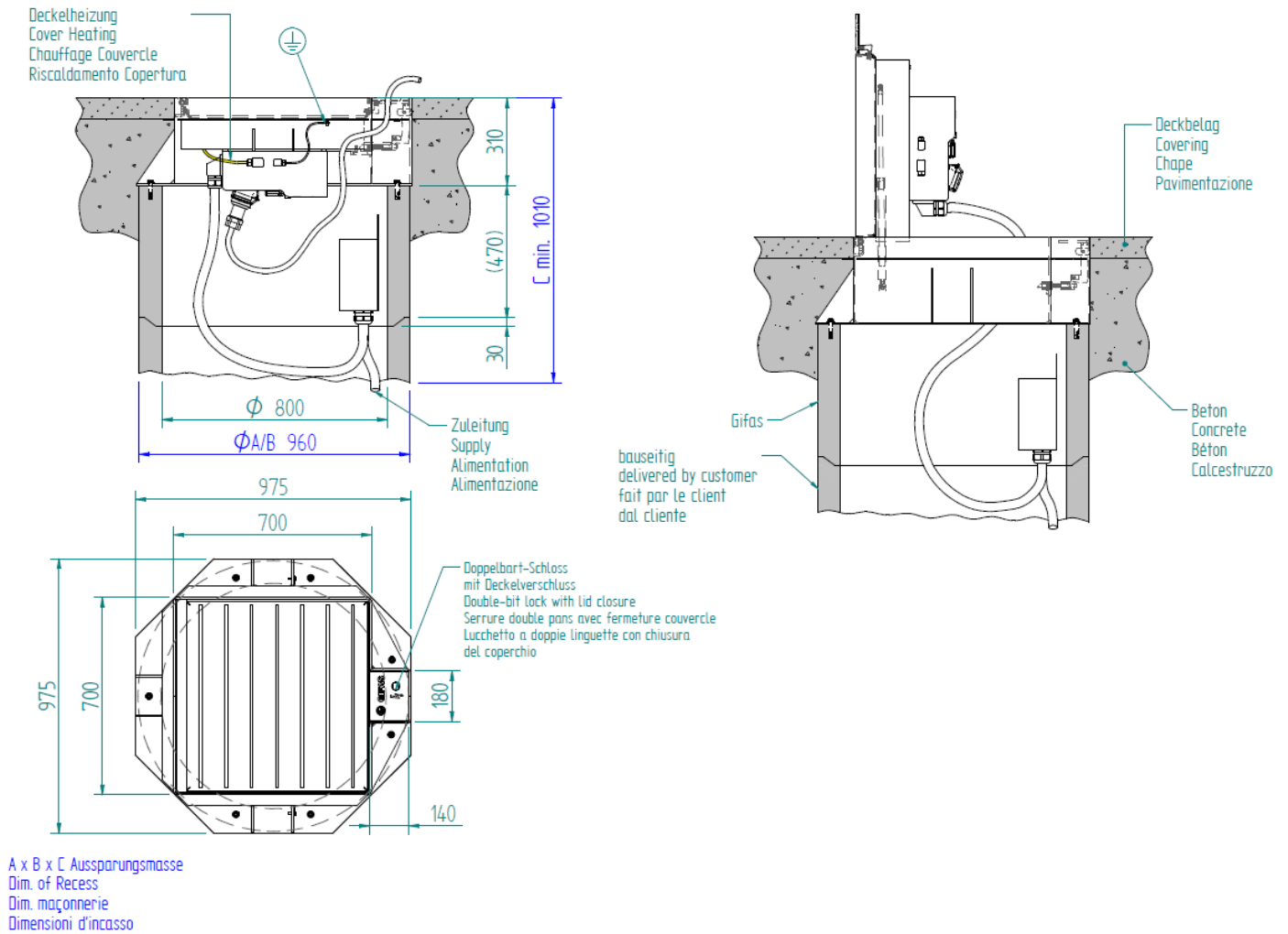
Underfloor distributor systems that are operated in open mode must not pose a safety risk when in operation (risk of falling, manipulation).

The electrical connection may only be made by trained personnel and is the responsibility of the operator.

2.2 Principle drawing

INDICATION

The details necessary for proper installation can be found on the project-specific drawing from GIFAS. Custom models may vary from the following drawings.



The cover opens automatically through the use of gas springs. They support muscular force and allow for the controlled opening and closing of the cover.

2.3 Installation Piazza

Excavation of the hole based on our specified measurements.



The standard concrete tube included and remounted with the stainless steel construction is prepared for installation: Milling out an opening for the supply cable.



Sink the entire unit into the prepared pit using suitable equipment (crane).



Fit the unit and level off to the correct installation Depth (level with asphalt).



Filling around and concrete in the base socket.



Filling up the reservoir cover with asphalt match up the Environment using the same filler material and adjust the Height tot he upper reservoir part.



INDICATION

Tighten any bolted connections that have been loosened due to transport or installation.

Open the cover carefully! Do not overstretch the gas spring with a cover that has not been filled up!

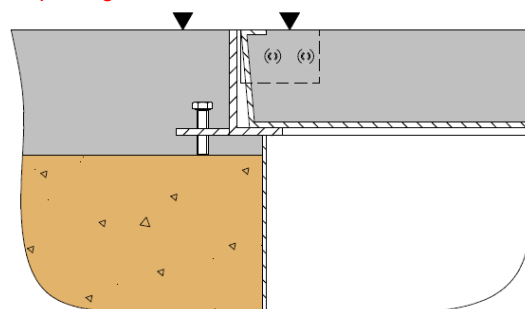
Before filling, the lock, hinge, and joints must be covered in order to prevent contamination with the adhesive mortar.



Do not overfill the cover!

The surroundings must not sink!

Top filling tolerance +0/-1mm.




- Have authorized personnel connect the electrical supply to the junction box and monitor the Campetto in accordance with the following inspection schedule.

3. Maintenance

3.1 Inspection and maintenance schedule

Work to be done:	Period:
Inspection of gas springs	1x per year
Inspection of lid hinge bar	1x per year
Inspection of lock system	1x per year
Cleaning of lid cover surface	1x per month
Cleaning of drainage	on demand
Checking electrical distributions/ install.	according to local regulations

 **WARNING** Gas springs are wear parts and must be replaced immediately in case of pressure loss in order to ensure a safe and gradual closing of the cover.

3.2 Description of maintenance and inspection works

The lock, hinges, as well as the gas spring(s) must be checked, cleaned and lubricated at appropriate intervals.

The surface of the cover or filled cover must be cleaned from dirt at appropriate intervals to ensure a safe and proper closing.


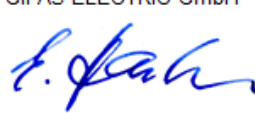
The electrical parts must be maintained and revised by professionally-trained personnel in accordance with national regulations and standards.

4. Debugging

4.1 Measures for elimination of errors

Bug / error	Possible cause(s)	Solution
Lid can hardly be opened	Failure of gas spring	Replace gas spring
Lid is closing too fast	Failure of gas spring	Replace gas spring
Lid is not closing	Lid surface is dirty	Clean lid surface
Lid is not closing	Failure of lock-system	Replace lock-system/ clean lock-system
Lid is bouncing	Failure of lid hinge bar	Replace lid hinge bar
Earth leakage circuit breaker is triggering	Electrical default	Repair/ revision by professionally trained personnel

5. Declaration of conformity

<p>GIFAS-ELECTRIC GmbH CH-9424 Rheineck · Dietrichstrasse 2 Postfach · Telefon +41 71 886 44 44</p>	
<div style="border: 1px solid black; padding: 5px; background-color: #f0f0f0;"> <p>KONFORMITÄTSERKLÄRUNG / DECLARATION OF CONFORMITY / DECLARATION DE CONFORMITE</p> </div>	
<p>Wir / We / Nous: GIFAS-ELECTRIC GmbH, CH-9424 Rheineck</p>	
<p>erklären in alleiniger Verantwortung, dass das nachfolgend aufgeführte Produkt aufgrund seiner Bestückung und Bauart in der von uns in Verkehr gebrachten Ausführung den einschlägigen Sicherheits- und Gesundheitsanforderungen der EU-Richtlinie entspricht. Bei einer nicht mit uns abgestimmten Änderung des Produkts verliert diese Erklärung ihre Gültigkeit.</p>	
<p>declare under our sole responsibility that the product about the equipment and construction as we put the execution into circulation of the appropriate security and health requested, correspond with the European guideline. Any change on the product without our agreement has the consequence, that the declaration will lose its validity.</p>	
<p>déclarons sous notre seule responsabilité que le produit sousmentionné correspond aux exigences de sécurité et de santé des lignes d'application CE, en raison de son équipement et son genre de construction. Cette déclaration perd sa validité lors de modification du produit sans notre accord.</p>	
<p>Produkt: Product: Produit:</p>	<p>Unterflurverteiler Underfloor distributor systems Distribution électrique souterraine</p>
<p>Typ/Type/Type:</p>	<p>Piazza 700-1000/D400</p>
<p>EU-Richtlinien: EC-Guidelines: Directives de la CE:</p>	<p>Niederspannungsrichtlinie 2006/95/EG Low-Voltage Directive (LVD) 2006/95/EC Directive Basse Tension 2006/95/EC</p>
<p>Angewandte Normen/ Applied standard/ Normes:</p>	<p>EN 1433 – D400 SN 640366 – Gruppe 4 EN 60439-1</p>
<p>CH-9424 Rheineck, den 16. Mai 2013</p>	<p>GIFAS-ELECTRIC GmbH</p>  <p>E. Hasler, Geschäftsführer E. Hasler, Managing Director E. Hasler, Président-directeur général</p>
<p style="font-size: small;">GIFAS-ELECTRIC GmbH · Dietrichstrasse 2 · CH-9424 Rheineck · Telefon +41 71 886 44 44 · Telefax +41 71 886 44 49 · info@gifas.ch</p>	